



MLT & MLT-X 960

INDUSTRIAL and AGRICULTURE HANDLING solutions



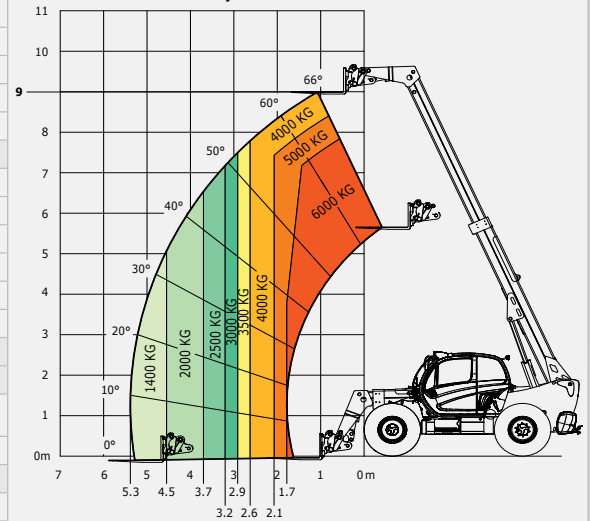


MLT & MLT-X 960

	MLT 960	MLT-X 960
Lifting		
Max. capacity		6000 kg
Max. lifting height		9 m
Max. outreach		5.3 m
Reach at max. height		1.1 m
Break-out force with bucket		7300 daN
Unladen time		
Lifting		8.5 secs
Lowering		6.5 secs
Extension		7 secs
Retraction		6 secs
Crowd		3.8 secs
Dump		3.6 secs
Tyres		500/70 - R24
Braking		
Service brake	hydraulic oil immersed multi-disc braking on front/rear axles	
Parking brake	automatic negative handbrake on the front axle	
Engine		
	JOHN DEERE	
Type	4045 PWX 104 kW St.IIIB	4045 - PWX St.IIIA
Cubic capacity	4500 cm ³	
Power	141 HP - 104 kW	137 HP - 102 kW
Max. torque	534 Nm - 1500 rpm	545 Nm - 1500 rpm
Injection	direct	
Cooling	water	
Laden drawbar pull	10000 daN	
Transmission		
Gearbox	CVT DANA 318	
Reversing shift	electrohydraulic control	
Max. travel speed (may vary according to applicable regulations)	40 kph	
Hydraulics		
	swashplate piston pumps electronically controlled variable cubic capacity	
Pump	180 l/min - 270 bar	
Control valve	Rexroth	
Capacities		
Hydraulic oil	153 l	
Fuel	135 l	
Unladen weight (with forks)	11400 kg	
Dimensions		
1. Ground clearance	0.45 m	
2. Overall length to carriage	6.1 m	
3. Wheelbase	3 m	
4. Overall width of cab	0.995 m	
5. Overall width	2.48 m	
6. Overall height	2.53 m	
7. Turning radius (over tyres)	4.3 m	
8. Turning radius (with forks)	5.49 m	
Standard forks (length x width x thickness)	1200 x 200 x 60 mm	
Noise and vibration		
Noise at driving position (LpA)	80 dB	
Environmental noise (LwA)	105 dB	
Vibration to whole hand/arm	< 2.5 m/s ²	

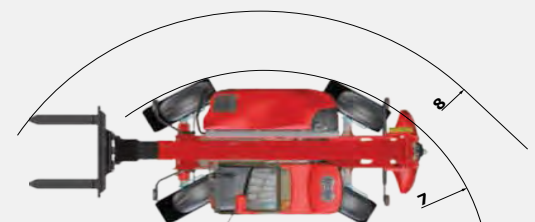
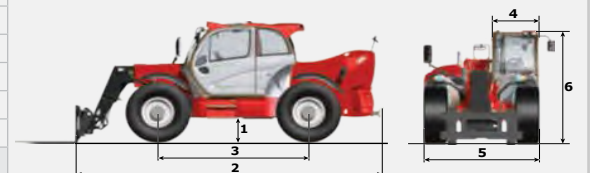
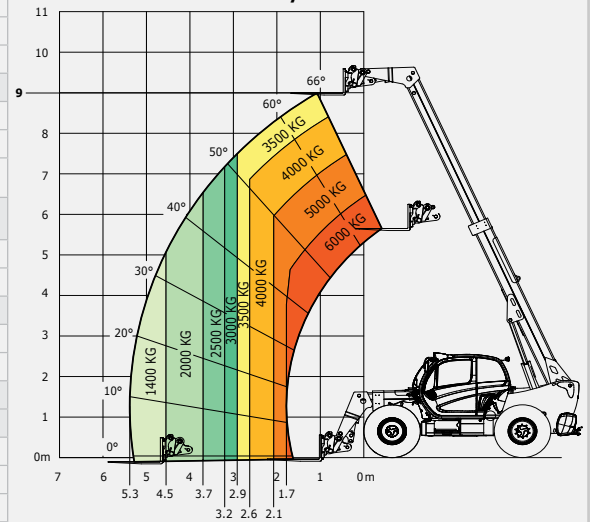
Industrial load chart
standard EN1459 A

Machine on tyres with forks - CDG 600mm



Rough terrain load chart
standard EN1459 B

Machine on tyres with forks



This brochure describes versions and configuration options for MANITOU products which may be fitted with different equipment. The equipment described in this brochure may be standard, optional or not available depending on version. MANITOU reserves the right to change the specifications shown and described at any time and without prior warning. The manufacturer is not liable for the specifications given. For more information, contact your MANITOU dealer. Non-contractual document. Product descriptions may differ from actual products. List of specifications is not comprehensive. The logos and visual identity of the company are the property of MANITOU and may not be used without authorisation. All rights reserved. The photos and diagrams contained in this brochure are provided for information only.

MANITOU BF SA - Limited company with board of directors - Share capital: 39,547,824 euros - 857 802 508 RCS Nantes





Your nearest **MANITOU** dealer:



9545 Concession 6N
Mount Forest, ON
NOG 2L0

519.323.4289

www.maplelanefarmservice.ca



Head office:

B.P. 249 - 430 rue de l'Aubinière - 44158 Ancenis Cedex - France

Tel: 00 33 (0)2 40 09 10 11 - Fax: 00 33 (0)2 40 09 10 97

www.manitou.com